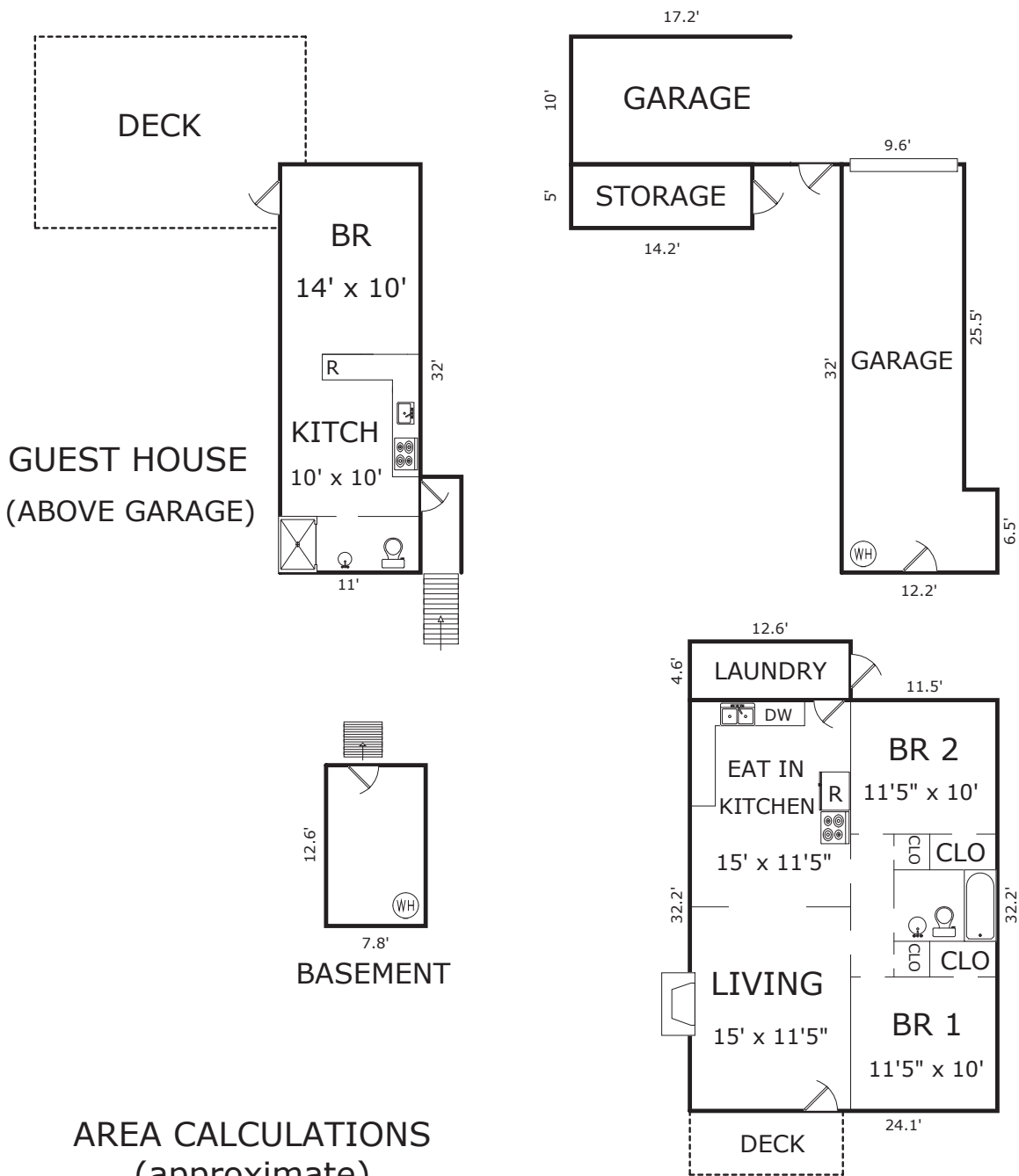


# 205 EARDLEY AVENUE, PACIFIC GROVE, CA 93950



## AREA CALCULATIONS (approximate)

Main Living Area:	776sf
Guest House:	352
<hr/>	<hr/>
Net Livable Area:	1,128sf

## MAIN LIVING AREA

Garage:	324
Garage:	172
Laundry:	58
Basement:	99
Deck:	290
Deck:	60
Storage:	71