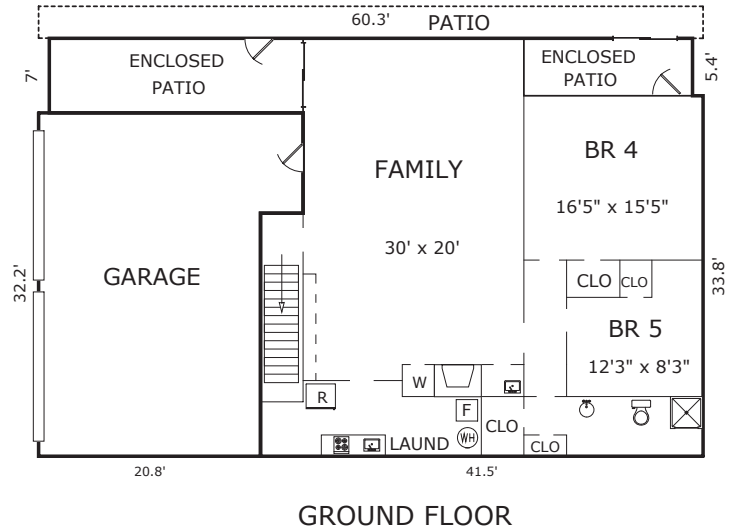
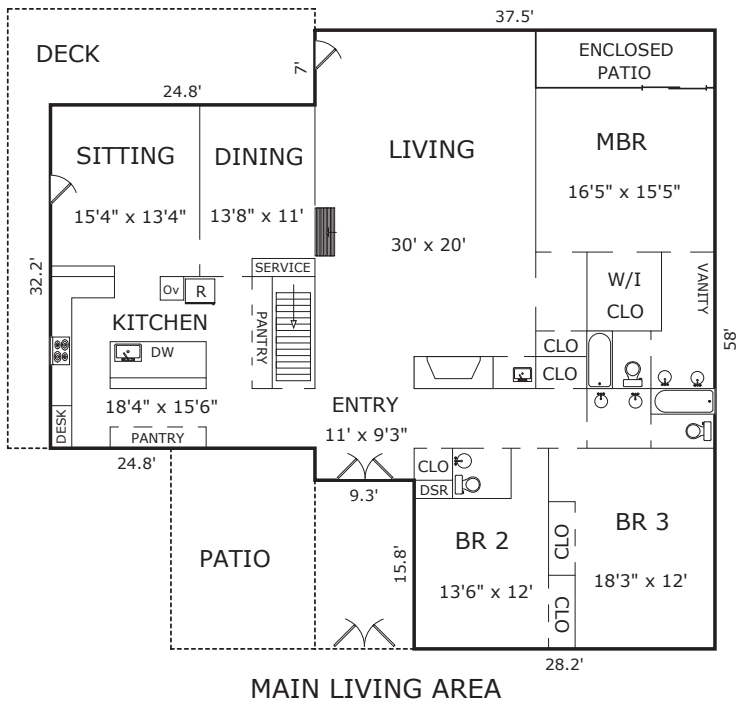


2715 RIBERA ROAD, CARMEL, CA 93923



AREA CALCULATIONS (approximate)

Main Living Area:	2,736sf
Ground Floor:	1,470
Net Livable Area:	4,206sf

Garage:	707		
Encl. Patio:	167	Encl. Patio:	91
Encl. Patio:	85	Patio:	401
Patio:	187	Deck:	388